



PRODUCT SPECIFICATION

KADI Model: KD101BWX60NP-FC65-AG

CUSTOMER Model: -

Description: 10.1" TFT-LCD Module with CTP

Version: 1.0

KADI	PREPARED BY	CHECKED BY	APPROVED BY
SIGNATURE			
DATE	2023.8.8	2023.8.8	2023.8.8

CUSTOMER APPROVAL	SIGNATURE	DATE



Record of Revisions

Version	Revise Date	Description	Page
1.0	2023-8-8	First Release	-

Contents

1. General Specifications	4
2. Absolute Maximum Ratings	5
3. Electrical Characteristics	5
4. Interface Pin Assignment	6
5. Interface Characteristics	8
6. Optical Specifications	11
7. Reliability Test Items	14
8. Mechanical Drawing	15
9. Packing	16
10. Precautions for Use of LCD modules	17

1. General Specifications

1.1 LCM General Information

Item	Specification	Unit
LCD Size	10.1	inch
Number of Pixels	1280 (H) RGB x 800 (V)	pixels
Display Mode	Normally Black	-
Viewing Direction	Free	o' clock
Interface	LVDS	-
Display Colors	16.7M	colors
Outline Dimension	256.50 (H) x 175.10 (V) x 5.80 (D)	mm
Active Area	216.96 (H) x 135.60 (V)	mm
Pixel Pitch	0.1695 (H) x 0.1695 (V)	mm
Driver IC	-	-
Operation Temperature	-20~60	°C
Storage Temperature	-30~70	°C

1.2 Touch Panel Information

Item	Specification
Touch Structure	G+G
Bonding Type with LCM	OCA Optical Bonding
Driver IC	ILI2511
Interface	USB
Touch Count Max	10 Points
Surface treatment	AG
Surface hardness	6H
I2C slave address	0x82
Origin of coordinate	Top Left Corner

Note1:Requirements on environmental protection RoHS compliant.

2. Absolute Maximum Ratings

Item	Symbol	MIN.	MAX.	Unit	Note
Analog Supply voltage	VDD	-0.3	5.0	V	Note 1

Note 1:Permanent damage may occur to the LCD module if beyond this specification.

Functional operation should be restricted to the conditions described under normal operating conditions.

3. Electrical Characteristics

3.1 Recommended Operating Condition for TFT LCD

Item	Symbol	Min.	Typ.	Max.	Unit	Note
Analog Supply voltage	VDDIN	3.0	3.3	3.6	V	
Analog supply current	I _{VDDIN}	-	TBD	-	mA	VDD=3.3V
Logic input voltage	V _{IH}	0.7*VDDIN	-	VDDIN	V	
	V _{IL}	GND	-	0.3*VDDIN	V	

3.2 Recommended Driving Condition for Backlight

Item	Symbol	Min.	Typ.	Max.	Unit	Note
Driving Current	I _F		220	280	mA	
Driving Voltage	V _F	11.5	-	12.5	V	
Power consumption	W _{BL}	2.53	-	3.50	W	
LED Life-Time	N/A	-	50,000	-	Hours	Ta=25°C Note 1

Note 1:LED lifetime is defined as the module brightness decay 50% of original brightness at Ta=25 degree, typical current.

Note 2:LED circuit :-

3.3 Touch Panel

Item	Symbol	Min.	Typ.	Max.	Unit	Note
Power Supply voltage	VDD	-	5.0	-	V	
Analog supply current	I _{VDD}	-	TBD	-	mA	VDD=5.0V
Input high-level voltage	V _{IH}	0.7*VDD	-	VDD	V	
Input low -level voltage	V _{IL}	GND	-	0.3*VDD	V	

4. Interface Pin Assignment

4.1 LCM Pin Assignment

No.	Symbol	Description
1	NC	No connection
2	VDDIN	Power supply VDDIN=3.3V(Typ.)
3	VDDIN	Power supply VDDIN=3.3V(Typ.)
4	VDDIN	Power supply VDDIN=3.3V(Typ.)
5	NC	No connection
6	CLK EDID	CLK for EDID function use
7	Data EDID	CLK for EDID function use
8	RIN0-	- LVDS differential data input
9	RIN0+	+ LVDS differential data input
10	GND	Ground
11	RIN1-	- LVDS differential data input
12	RIN1+	+ LVDS differential data input
13	GND	Ground
14	RIN2-	- LVDS differential data input
15	RIN2+	+ LVDS differential data input
16	GND	Ground
17	LVDS_CLK-	-LVDS differential clock input
18	LVDS_CLK+	+LVDS differential clock input
19	GND	Ground
20	RIN3-	- LVDS differential data input
21	RIN3+	+ LVDS differential data input
22	NC	No connection
23	NC	No connection
24	NC	No connection
25	GND	Ground
26	NC	No connection
27	NC	No connection
28	GND	Ground
29	NC	No connection
30	NC	No connection
31	LED_GND	LED_GND
32	LED_GND	LED_GND
33	LED_GND	LED_GND
34	NC	No connection
35	LED_PWM	PWM LED dimming control
36	LED_EN	LED switch signal
37	NC	No connection

38	VLED	Power for LED backlight
39	VLED	Power for LED backlight
40	VLED	Power for LED backlight

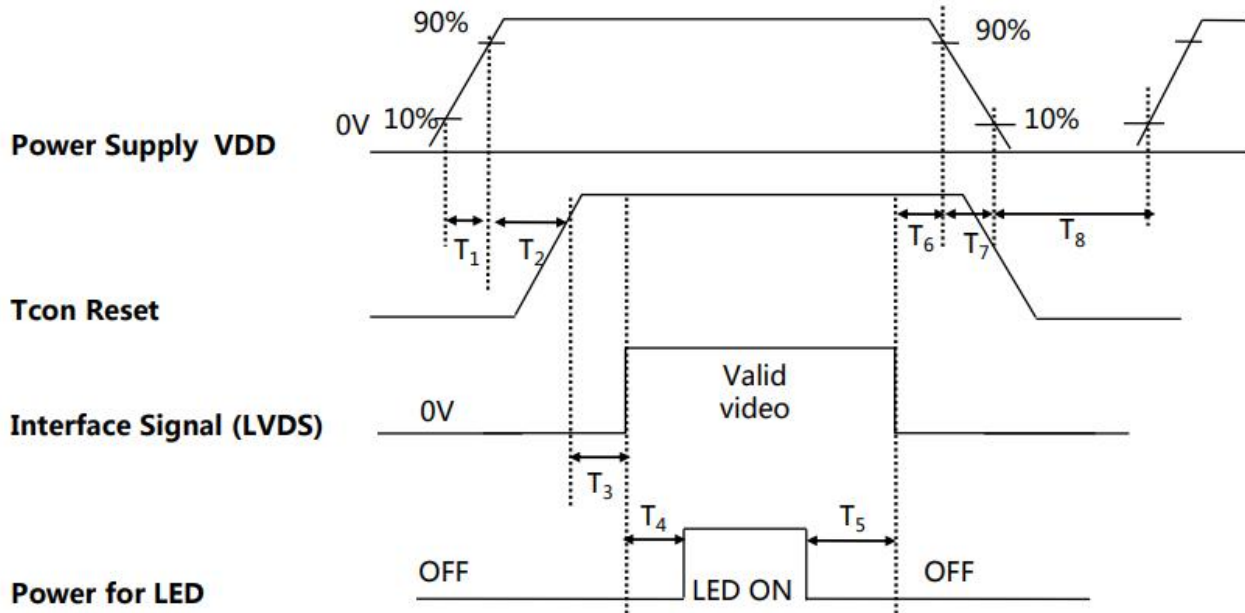
4.2 Touch FPC Pin Assignment

No.	Symbol	Description
1	USB-VDD5V	Power supply for CTP(5V)
2	USB D-	Data- input
3	USB D+	Data+ input
4	USB-GND	Ground

5. Interface Characteristics

5.1 Power Sequence

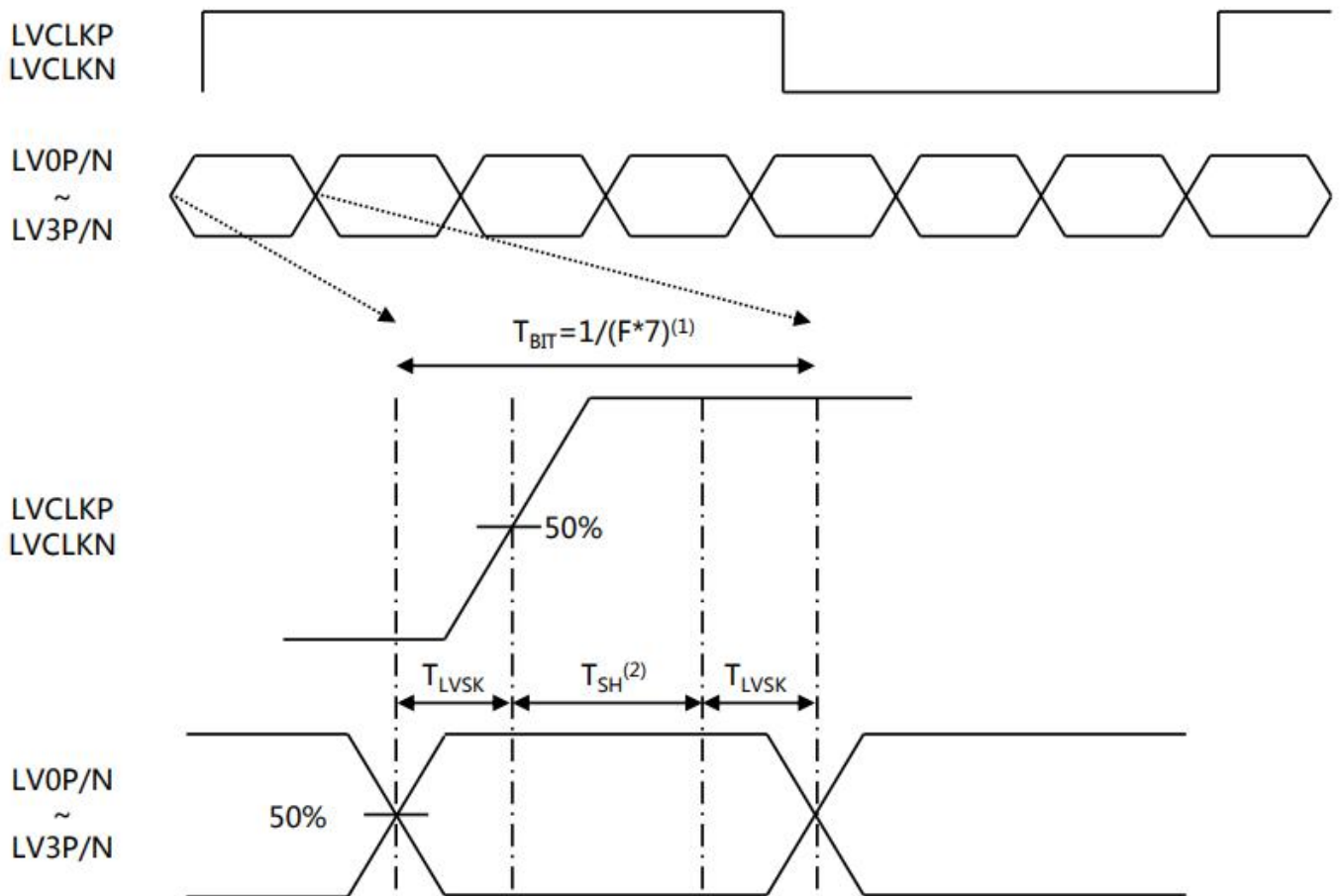
[Ta = 25±2 °C]



< Table 10. Sequence Table >

Parameter	Value			Units
	Min.	Typ.	Max.	
T1	0.1	-	8	(ms)
T2	-	8	-	(ms)
T3	0	-	-	(ms)
T4	300	-	-	(ms)
T5	300	-	-	(ms)
T6	0	-	50	(ms)
T7	0	-	10	(ms)
T8	500	-	-	(ms)

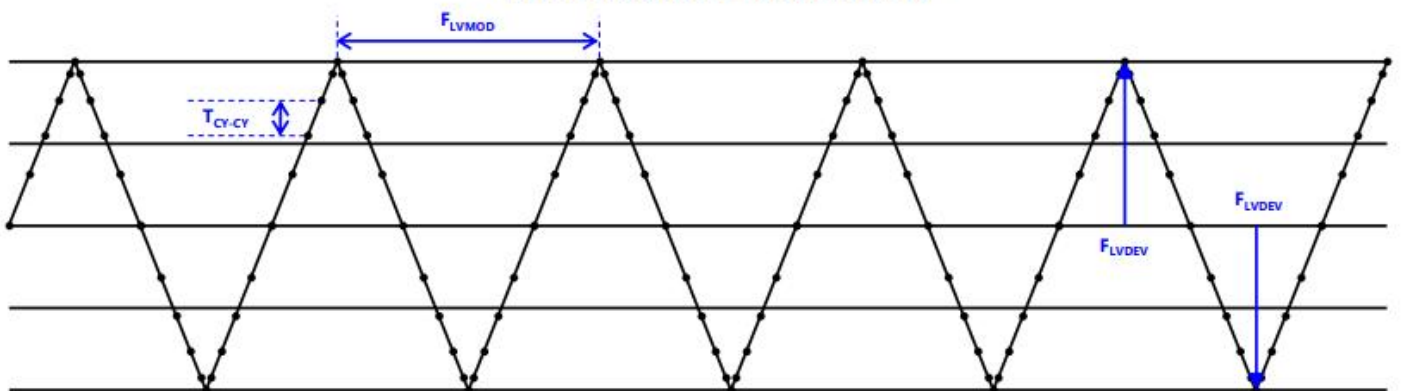
5.2 AC Specification



Note:

- (1) T_{BIT} : Data period
- (2) Internal CLK sampling data window

< LVDS channel to channel skew >



< Table 8. AC Specification >

Description	Symbol	Condition	Min.	Typ.	Max.	Unit
LVDS Input frequency	F	-	68	-	74	MHz
LVDS channel to channel skew	T_{LVSK}	F=65MHz $V_{IC}=1.2V$ $V_{ID}=\pm 200mV$	-600	-	+600	ps
Modulating frequency of input clock during SSC	F_{LVMOD}	F=85MHz $V_{IC}=1.2V$ $V_{ID}=\pm 200mV$	10	-	300	KHz
Maximum deviation of input clock frequency during SSC	F_{LVDEV}		-3	-	+3	%
Cycle to cycle jitter	T_{CY-CY}		-	-	200	ps

5.3 Interface timing Parameter

< Table9. Timing Parameter >

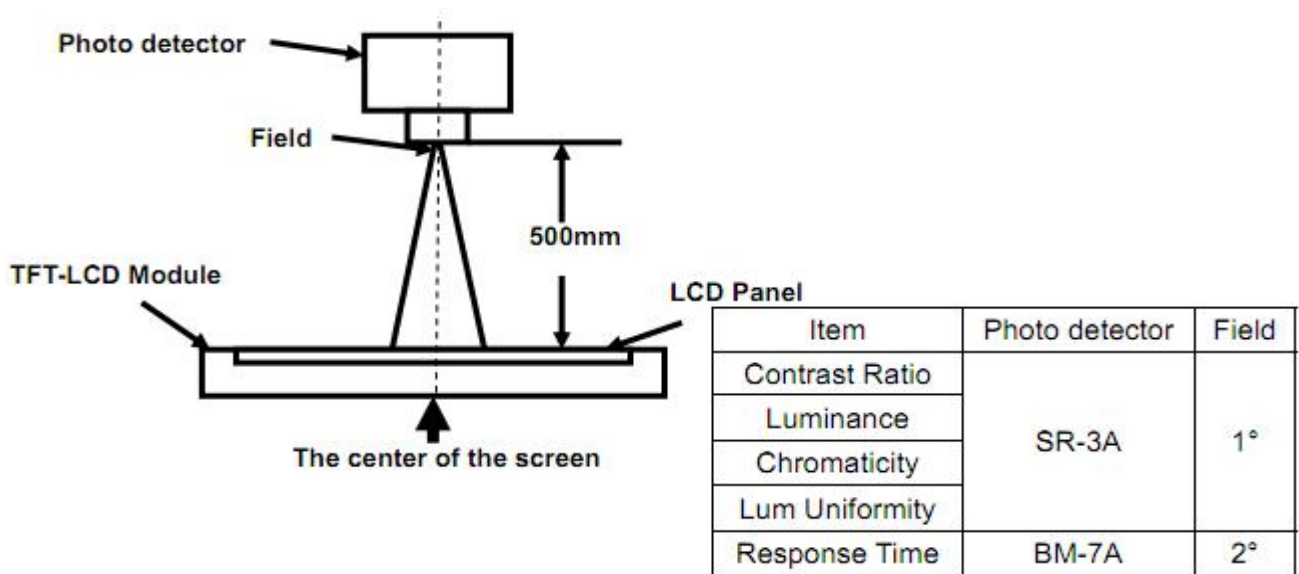
Item		Symbol	Min.	Typ.	Max.	Unit	
LCD	Frame Rate	-	59	60	61	Hz	
	Pixels Rate	-	69.922	71	72.293	MHz	
Timing	Horizontal	Horizontal total time	t_{HP}	-	1440	-	t_{CLK}
		Horizontal Active time	t_{Hadr}	1280			t_{CLK}
		Horizontal Back Porch	t_{HBP}		80		t_{CLK}
		Horizontal Front Porch	t_{HFP}		48		t_{CLK}
	Vertical	Vertical total time	t_{VP}		823		t_H
		Vertical Active time	t_{Vadr}	800			t_H
		Vertical Back Porch	t_{VBP}		14		t_H
		Vertical Front Porch	t_{VFP}		3		t_H
Lane			-	1	-	Lane	

6. Optical Specifications

Item	Symbol	Condition	Min.	Typ.	Max.	Unit	Note
Viewing Angle (CR≥10) B/L ON	θ_T	$\Phi=90^\circ$ (12 o'clock)	80	85	-	deg	Note2
	θ_B	$\Phi=270^\circ$ (6 o'clock)	80	85	-	deg	Note2
	θ_L	$\Phi=180^\circ$ (9 o'clock)	80	85	-	deg	Note2
	θ_R	$\Phi=0^\circ$ (3 o'clock)	80	85	-	deg	Note2
Response Time	T_{ON}	Normal $\theta=\Phi=0^\circ$	-	15	17	msec	Note4
	T_{OFF}		-	15	17	msec	Note4
Contrast Ratio	CR		700	900	-	-	Note1 Note3
Color Chromaticity	W_X		0.263	0.313	0.363	-	Note1 Note5
	W_Y		0.279	0.329	0.379	-	Note1 Note5
Luminance	L		290	340	-	cd/m ²	Note1 Note7
Luminance Uniformity	Y_U		75	80	-	%	Note1 Note6
NTSC	-		45	50	-	%	-

Note 1: Definition of optical measurement system

The optical characteristics should be measured in dark room. After 5 minutes operation, the optical properties are measured at the center point of the LCD screen. All input terminals LCD panel must be ground when measuring the center area of the panel.



Note 2: Definition of viewing angle range and measurement system

Viewing angle is measured at the center point of the LCD by CONOSCOPE(ergo-80).

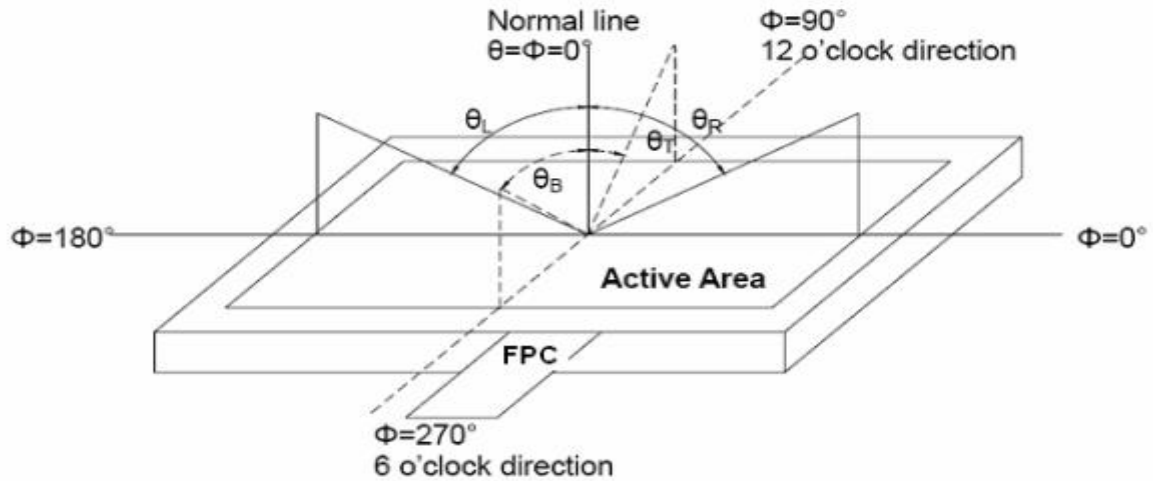


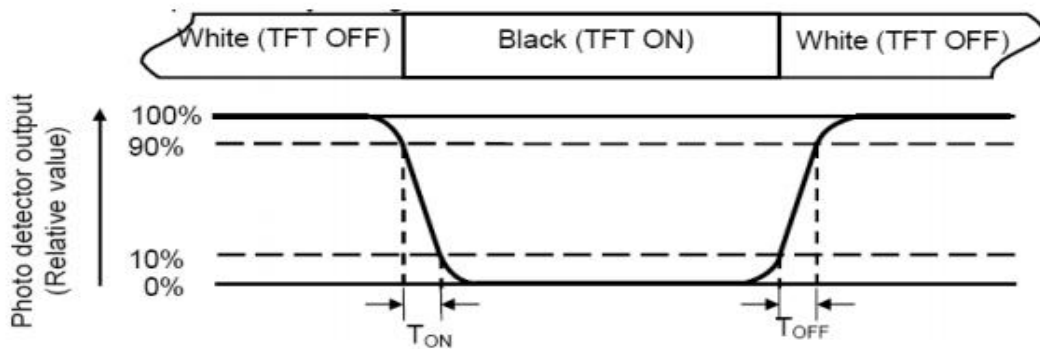
Fig. 1 Definition of viewing angle

Note 3: Definition of contrast ratio

$$CR = \frac{\text{Luminance with all pixels white}}{\text{Luminance with all pixels black}}$$

Note 4: Definition of Response time

The response time is defined as the LCD optical switching time interval between “White” state and “Black”state. Rise time (TON) is the time between photo detector output intensity changed from 90% to 10%. And fall time (TOFF) is the time between photo detector output intensity changed from 10% to 90%.



Note 5: Definition of color chromaticity (CIE1931)

Color coordinates measured at center point of LCD.

Note 6: Definition of Luminance Uniformity

The luminance uniformity in surface luminance is determined by measuring luminance at each test position 1 through n, and then dividing the maximum luminance of n points luminance by minimum luminance of n points luminance. For more information see FIG.2.

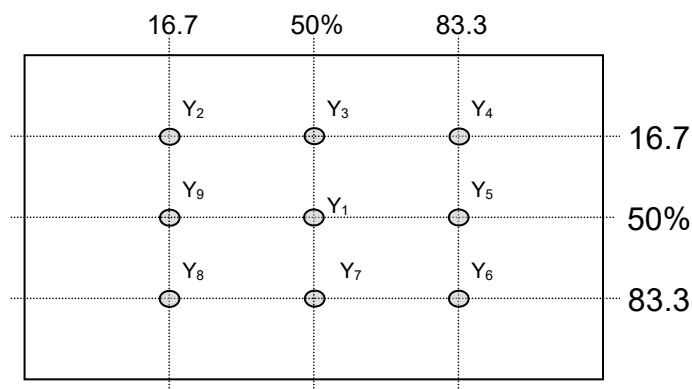


Fig. 2 Definition of points

Note 7: Definition of Luminance (Refer Fig. 2)

Surface luminance is the luminance with all pixels displaying white.

L_v = Average Surface Luminance with all white pixels($P_1, P_2, P_3, \dots, P_n$).



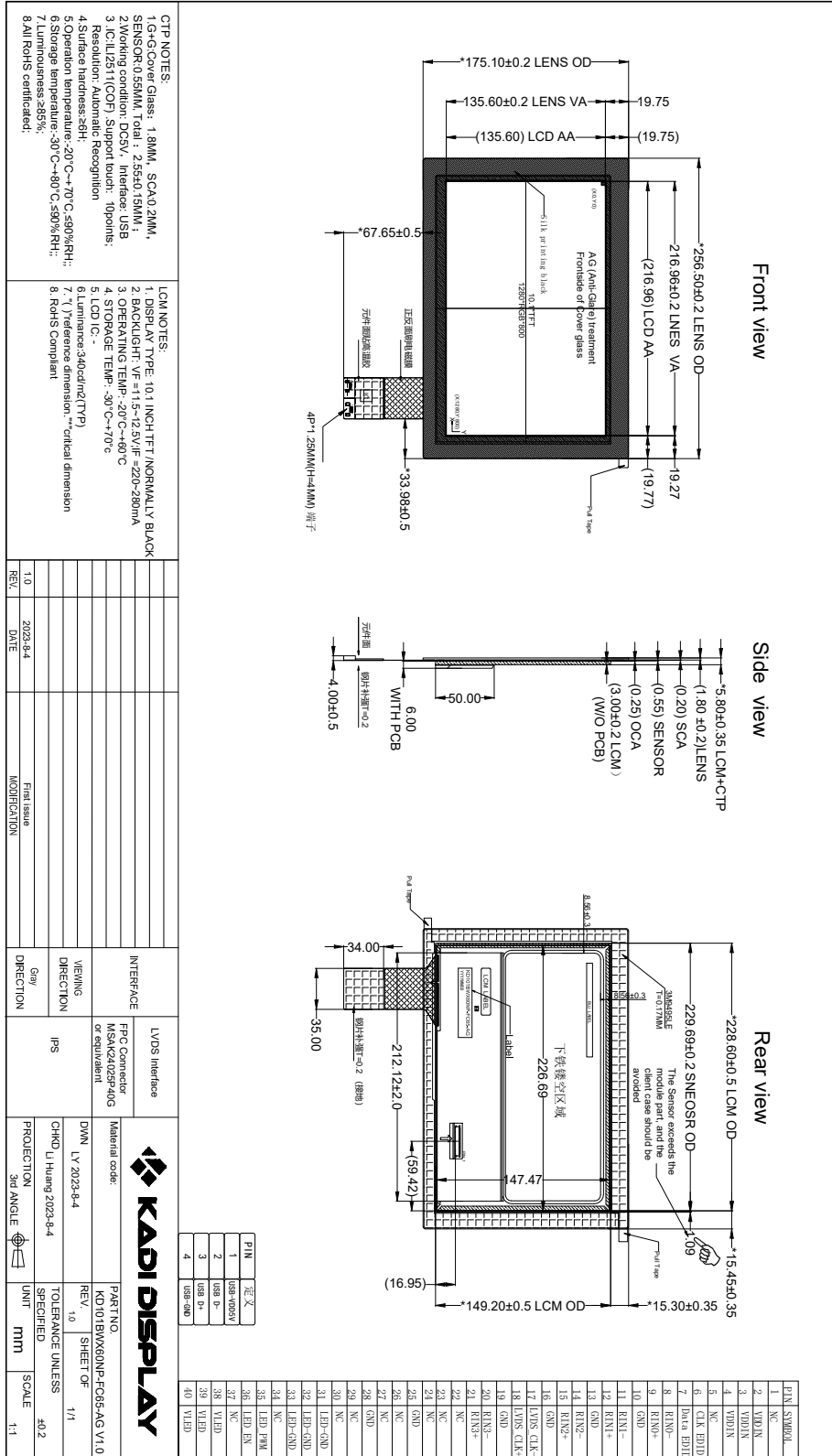
7. Reliability Test Items

Test Item	Test Conditions
High Temperature Storage	Ta= +70°C 96hrs
Low Temperature Storage	Ta= -30°C 96hrs
High Temperature Operation	Ta= +60°C 96hrs
Low Temperature Operation	Ta= -20°C 96hrs
High Temperature and Humidity Storage	Ta= +60°C, 90% RH 96hrs
Thermal Shock (Non-operation)	-30°C/30 min ~ +70°C/30 min for 20 cycles Start with cold temperature end with high temperature
Electro Static Discharge	Contact = ± 4 kV, class B Air = ± 8 kV, class B R=330Ω,C=150pF
Vibration	Sweep: 10Hz~55Hz~10Hz Stroke: 1.5mm 2 hrs for each direction of X .Y. Z.
Mechanical Shock	60G 6ms,±X,±Y,±Z 3 times for each direction
Package Drop Test	Height: 60 cm 1 corner, 3 edges, 6 surfaces

Notes: The test result shall be evaluated after the sample has been left at room temperature and humidity for 2 hours without load. No condensation shall be accepted. The sample will not be accepted if appear these defects:

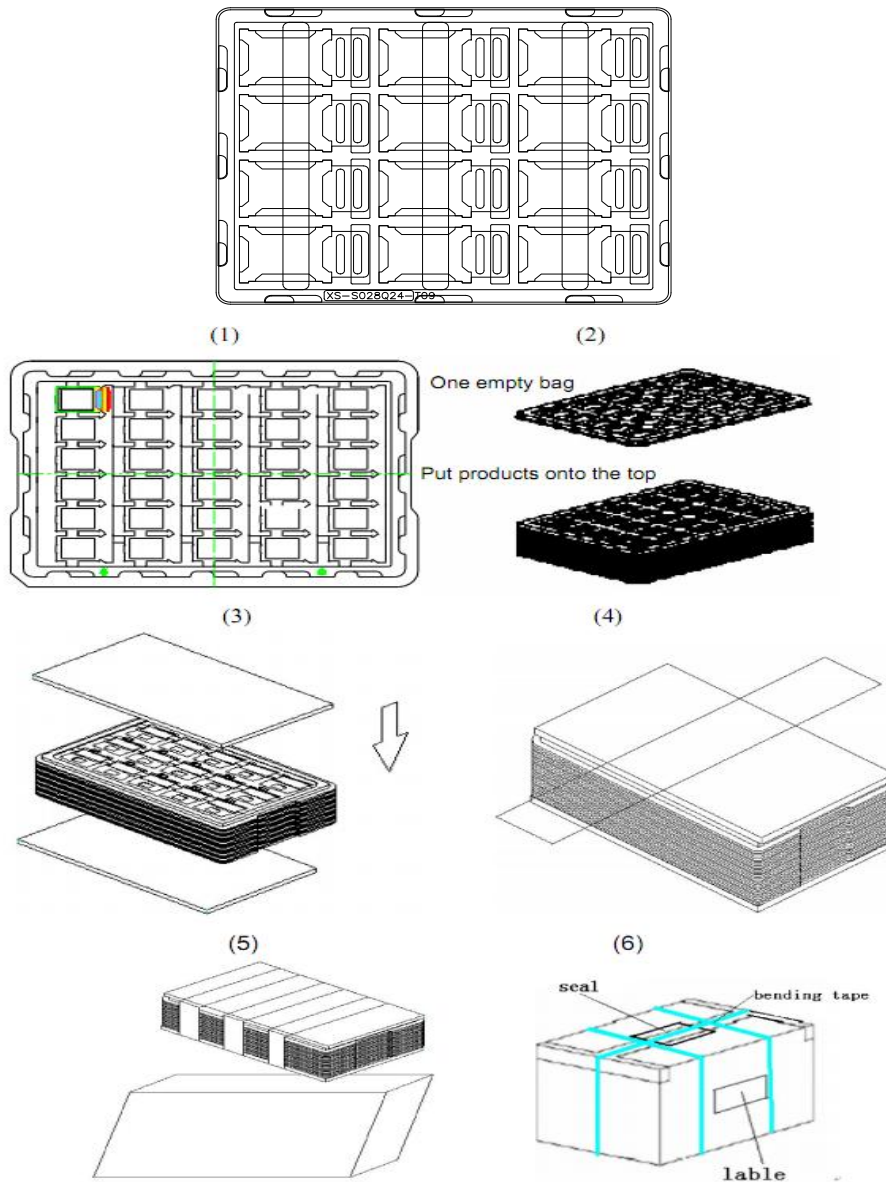
- 1). Air bubble in the LCD
- 2). Seal leak or Glass crack
- 3). Non display or abnormal display
- 4). Brightness reduction >50%

8. Mechanical Drawing



9. Packing

Packing Method



Steps:

1. Put module into tray cavity
2. Tray stacking
3. Put 1 cardboard under the tray stack and 1 cardboard above
4. Fix the cardboard to the tray stack with adhesive tape
5. Put the tray stack into carton
6. Carton sealing with adhesive tape



10. Precautions for Use of LCD modules

10.1 Handling Precautions

10.1.1. The display panel is made of glass. Do not subject it to a mechanical shock by dropping it from a high place, etc.

10.1.2. If the display panel is damaged and the liquid crystal substance inside it leaks out, be sure not to get any in your mouth, if the substance comes into contact with your skin or clothes, promptly wash it off using soap and water.

10.1.3. Do not apply excessive force to the display surface or the adjoining areas since this may cause the color tone to vary.

10.1.4. The polarizer covering the display surface of the LCD module is soft and easily scratched. Handle this polarizer carefully.

10.1.5. If the display surface is contaminated, breathe on the surface and gently wipe it with a soft dry cloth. If still not completely clear, moisten cloth with one of the following solvents:

- Isopropyl alcohol
- Ethyl alcohol

Solvents other than those mentioned above may damage the polarizer. Especially, do not use the following:

- Water
- Ketene
- Aromatic solvents

10.1.6. Do not attempt to disassemble the LCD Module.

10.1.7. If the logic circuit power is off, do not apply the input signals.

10.1.8. To prevent destruction of the elements by static electricity, be careful to maintain an optimum work environment.

10.1.8.1. Be sure to ground the body when handling the LCD Modules.

10.1.8.2. Tools required for assembly, such as soldering irons, must be properly ground.

10.1.8.3. To reduce the amount of static electricity generated, do not conduct assembly and other work under dry conditions.

10.1.8.4. The LCD Module is coated with a film to protect the display surface. Be care when peeling off this protective film since static electricity may be generated.

10.2 Storage Precautions

10.2.1. When storing the LCD modules, avoid exposure to direct sunlight or to the light of fluorescent lamps.

10.2.2. The LCD modules should be stored under the storage temperature range if the LCD modules will be stored for a long time, the recommend condition is :

Temperature : 0°C ~40°C Relatively humidity: ≤80%

10.2.3. The LCD modules should be stored in the room without acid, alkali and harmful gas.

10.3 Transportation Precautions

The LCD modules should be no falling and violent shocking during transportation, and also should avoid excessive press, water, damp and sunshine.